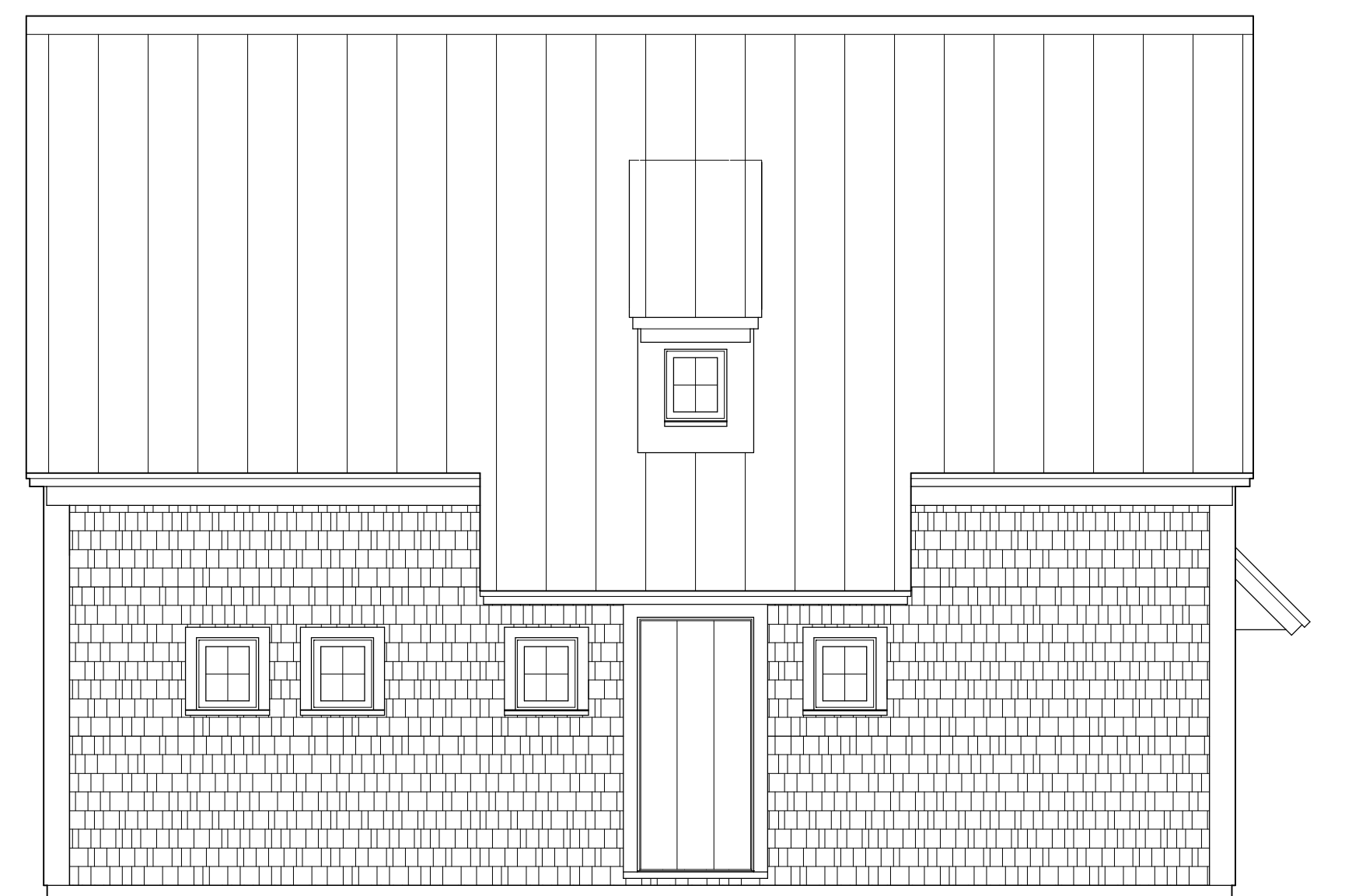




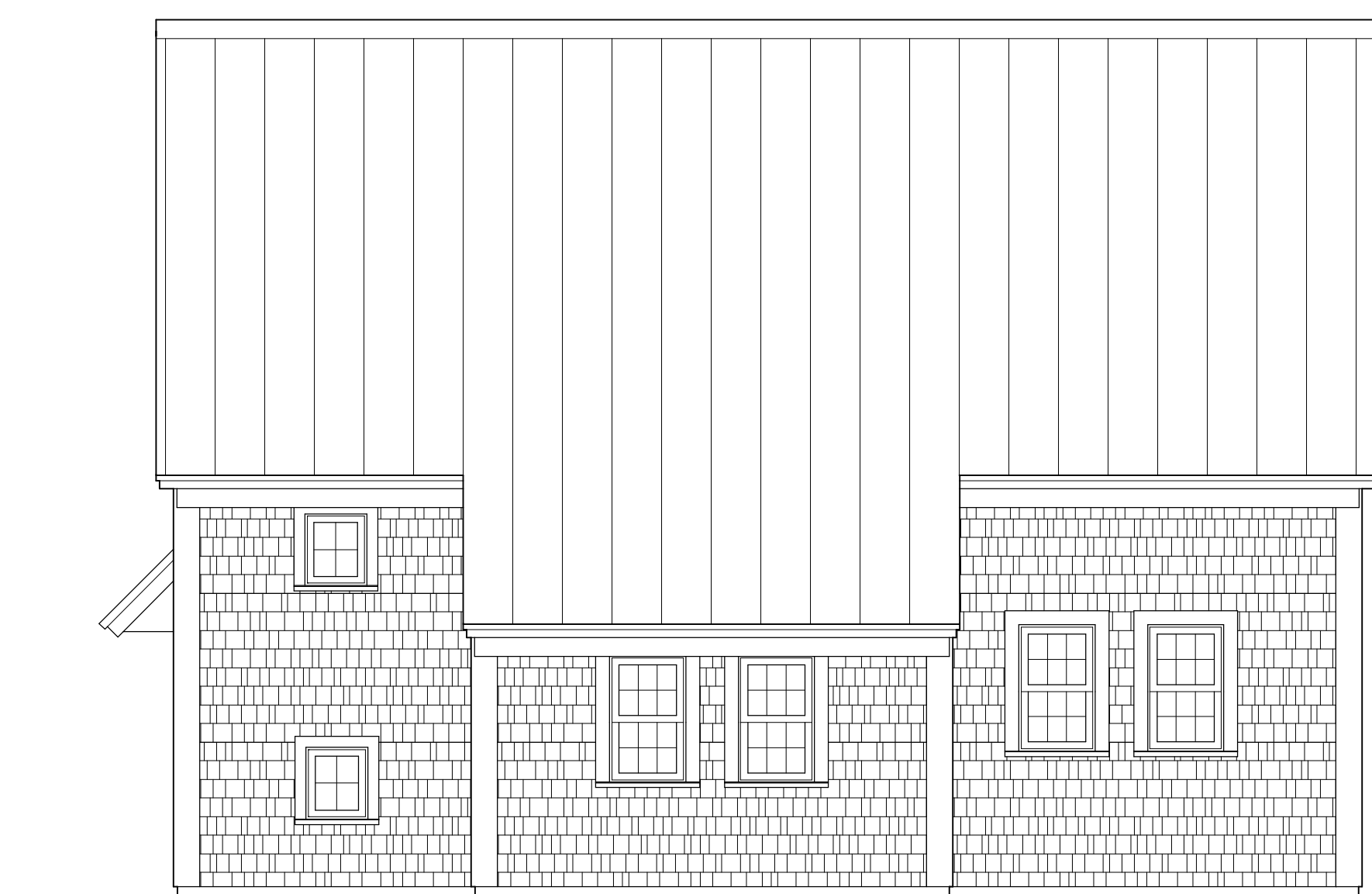
N NORTH ELEVATION

SCALE: 1/4" = 1'-0"



W WEST ELEVATION

SCALE: 1/4" = 1'-0"



E EAST ELEVATION

SCALE: 1/4" = 1'-0"



S SOUTH ELEVATION

SCALE: 1/4" = 1'-0"

PROGRESS PRINTS

FOR REVIEW ONLY

NOT FOR
CONSTRUCTION

ADDITION 1 RENOVATIONS TO RESIDENCE FOR:
PARSON CAPEN HOUSE
ONE HOWLETT STREET
TOPSFIELD, MASSACHUSETTS, 01983

BUILDING ELEVATIONS

SCALE: AS NOTED

PRINTS MADE: AUGUST 30, 2010
BID PERMIT:
CONSTRUCTION:

DRAWN BY:
BAKER M

BENJAMIN NUTTER ARCHITECTS, LLC
POST OFFICE BOX 254
TOPSFIELD, MASSACHUSETTS 01983
T: 978.881.9534 F: 978.881.9831 BENJAMINNUTTER.COM

