

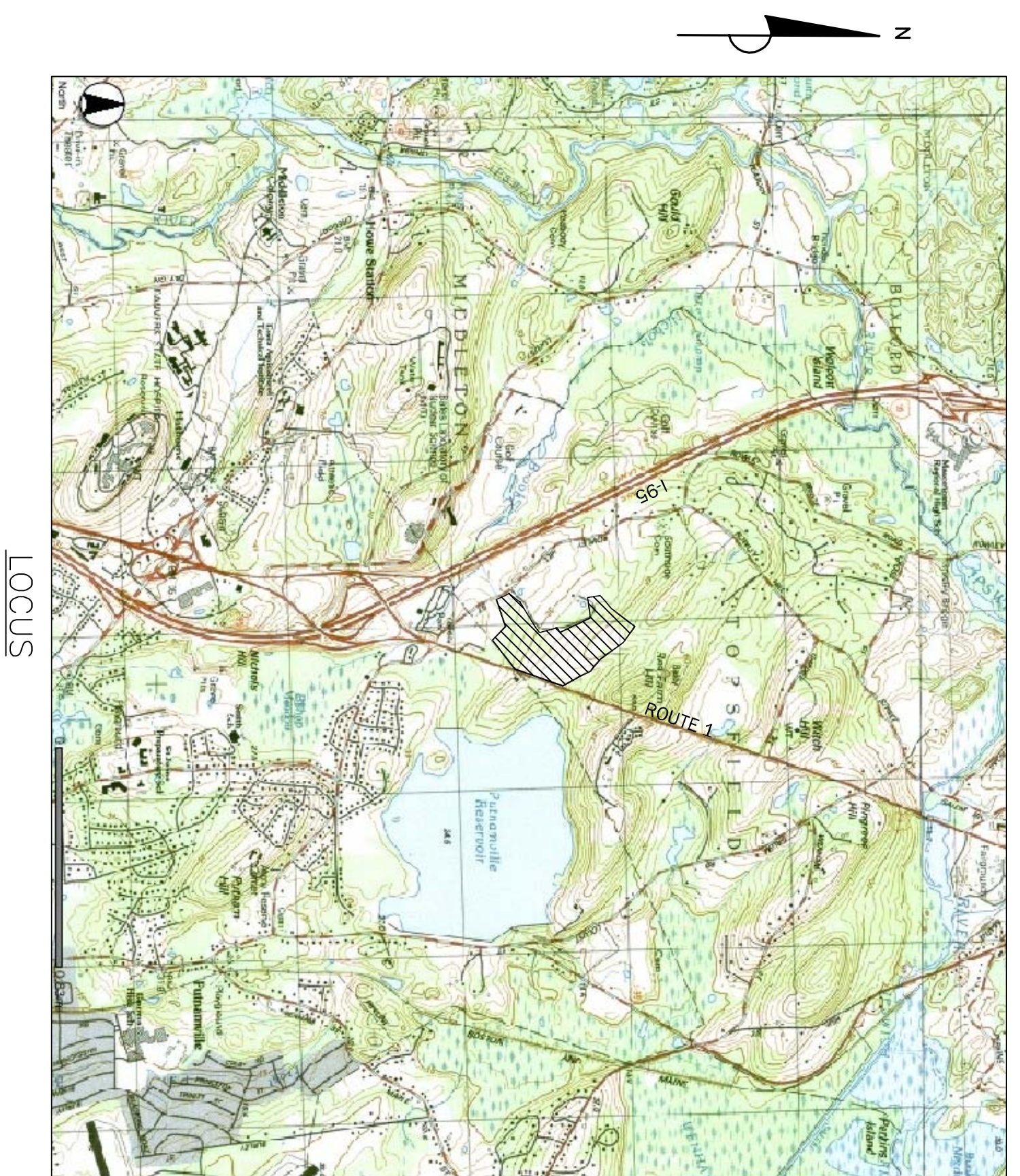
PLANS TO ACCOMPANY
AN ELDERLY HOUSING DISTRICT SPECIAL PERMIT
 AND
A NOTICE OF INTENT
 FOR:
ENGLISH COMMONS AT TOPSFIELD
12 BOSTON STREET
 IN THE TOWN OF
TOPSFIELD, MASSACHUSETTS

APPROVED:
 TOPSFIELD PLANNING BOARD
 DATE:

OWNER:
 BOSTON COLLEGE
 140 COMMONWEALTH AVENUE
 CHESTNUT HILL, MA 02467

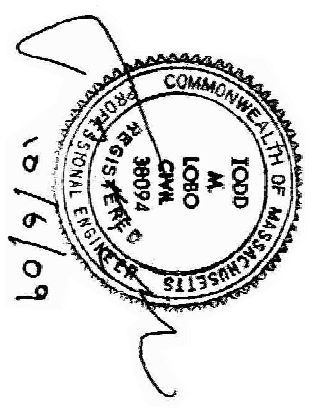
APPLICANT:
 ENGLISH COMMONS, LLC.
 460 BOSTON STREET
 TOPSFIELD, MA 01983

LAND PLANNERS—CIVIL ENGINEERS:
 BEALS ASSOCIATES, INC.
 2 THIRTEENTH STREET
 CHARLESTOWN, MA 02129



LOCUS

DESCRIPTION	SHEET NUMBER
COVER	1
INDEX	2
EXISTING CONDITIONS	3
SITE PLAN	4
GRADING & DRAINAGE	5
GRADING & DRAINAGE	6
DRAINAGE PROFILES	7
DRIVEWAY LAYOUT	8
DRIVEWAY LAYOUT	9
UTILITIES	10
UTILITIES	11
UTILITIES	12
DETAILS — UTILITY	13
DETAILS — DRAINAGE	14
DETAILS — DRAINAGE	15
DETAILS — DRIVEWAYS	16
DETAILS — DRIVEWAYS	17
EROSION & SEDIMENTATION PLAN	18
TRAFFIC FLOW PLAN	19
ROUTE 1 ENTRANCE PLAN	20
LANDSCAPE PLAN	20



Date: JUNE 17, 2009

Revisions	Number	Date	Description
1. REVISED PER SUBSURFACE DISPOSAL SYSTEM	08.05.09		
2. REV. FOR MASSINGHAM ENTRANCE AND LANDSCAPING	08.23.09		
3. REVISED PER PLANNING BOARD COMMENTS	09.13.09		
4. REVISED PER PLANNING BOARD COMMENTS	09.23.09		
4. ISSUED FOR APPROVAL	10.06.09		